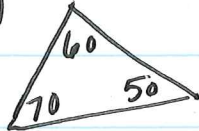
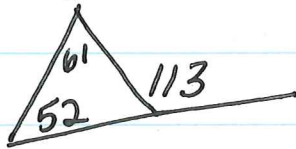


4-2 Angles of Triangles

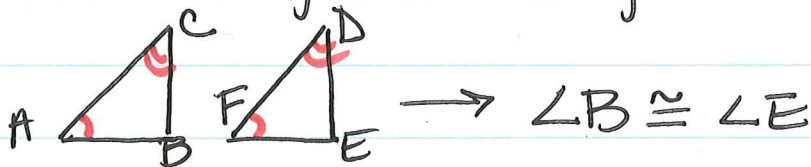
Angle Sum Theorem = The sum of the measures of angles of a triangle is 180.



Exterior Angle Theorem = The measure of an exterior angle of a triangle is the sum of two remote interior angles.

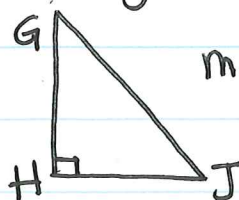


Third Angle Theorem = If two angles of one triangle are congruent to two angles of another triangle, then the third angles are congruent.



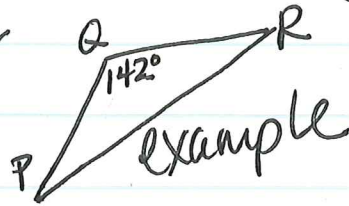
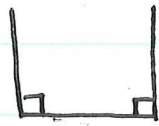
Corollaries:

The acute angles of a right triangle are complementary.



$$m\angle G + m\angle J = 90$$

There can be at most one right angle or one obtuse angle in a triangle.



Counter examples

HW: P.